

MISCELLANEOUS



HOSE BINDING MACHINE

Material : Body - Aluminium Alloy or Cast
Iron Jaw chuck - Copper Alloy
Capacity : Up to 100mmø hose
Process time : Approximately 20mins per length of hose

Code No	MIS229-MS-STD-NA
---------	------------------



METAL SUCTION STRAINER

Code No.	Material
MIS215-GM-100-NA	Copper Alloy
MIS215-LA-100-NA	Aluminium Alloy

Connection : 100mm ø round thread



L.A HAND OPERATED ALARM BELL SPECIFICATION

Material : Aluminium Alloy
Sound Level at 1m : 105 dB

Code No	MIS212-LA-STD-RD
---------	------------------



BASKET SUCTION STRAINER

Code No.	Material
MIS214-XX-100-NA	Cane
MIS214-PS-100-NA	Plastic



APPLICATOR SPECIFICATION

Diameter : 25.0mm I/D
Protector : Rubber
Material of nozzle : Aluminium Alloy
Outlet pattern : Spray
Length adjustable from : 1800-3060mm

Code No	FEX158-LA-025-BK
---------	------------------



SUCTION HOSE COUPLING

Code No.	Material
MIS217-LA-100-NA	Aluminium Alloy
MIS217-GM-100-NA	Copper Alloy

Hose connection : 100mm ø ribbed tail to BS 336



FIRE BLANKET

Material of blanket : Woven Fibre Glass
Other sizes available upon request
Application : Kitchen



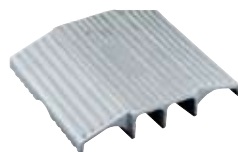
Code No.	Material
MIS258-FG-XXX-RD	Plastic pouch red 4ft x 4ft
MIS255-FG-STD-RD	Plastic rigid container 4ft x 4ft
MIS255-FG-6X6-RD	Plastic rigid container 6ft x 6ft
FBT005-10X10HC	Plastic rigid container 1m x 1m
FBT005-12X12HC	Plastic rigid container 1.2m x 1.2m



SUCTION HOSE COUPLING WRENCH

Material : Galvanised mild steel

Code No	MIS213-MS-100-BK
---------	------------------



HOSE BRIDGE

Material : Aluminium Alloy
Capacity : Up to 65mmø hose

Code No	MIS245-LA-065-NA
---------	------------------



SUCTION HOSE

Material : PVC with nylon reinforcement
Length(std) : 2.4m (standard)
Optional length available upon request
Diameter : 100mm ø

Code No	MIS269-PS-100-NA
---------	------------------



CURTAIN NOZZLE

Material : Copper Alloy
Finishing : Natural

Code No	MIS256-GM-065-RD
---------	------------------



DUCT HOUSING

Material : Aluminium Alloy

Code No	FAS199-LA-STD-RD
---------	------------------



COUPLING OPENER

Material : M.S Galvanised
Finishing : Chrome

Code No	MIS048-MS-100-CH
---------	------------------



SUCTION HOSE STAND

Material : M.S Galvanised Adjustable height
Finishing : Red

Code No	MIS268-MS-STD-RD
---------	------------------